

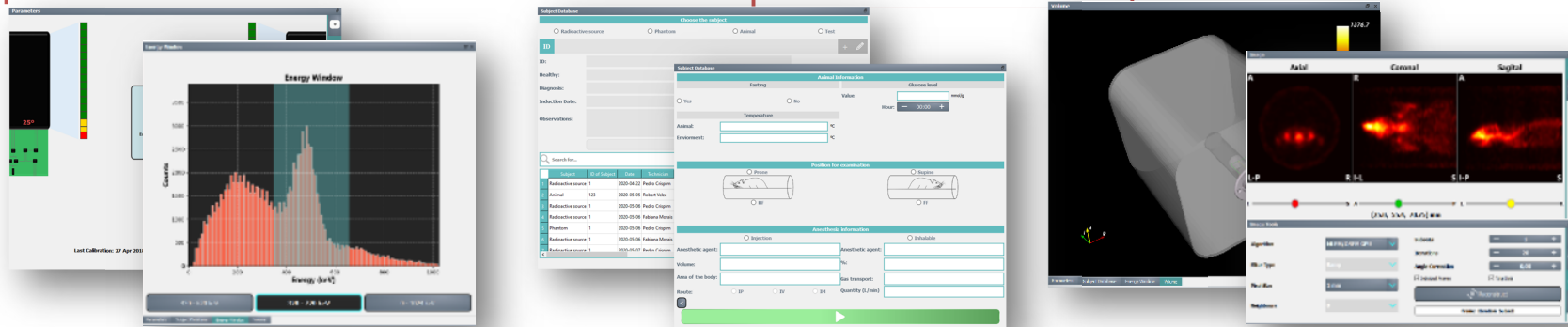
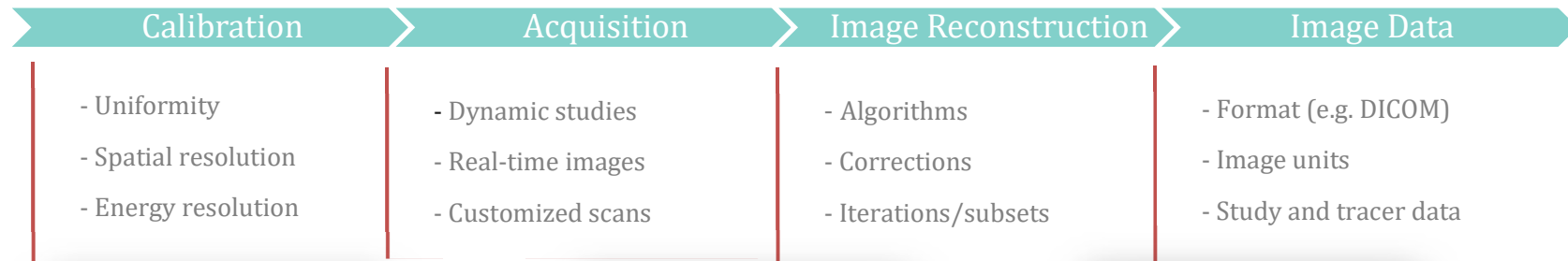
Overview

The latest release of EasyPET.3D® software features a new, user-friendly GUI which provides easy access to vast functionalities for both preclinical and academic users. The GUI enables users to build their own customized scans, providing multiple options for optimization based on parameter adjustment, making easyPET® software simple and efficient. EasyPET.3D® software is an integrated solution for system control, image acquisition, visualization and analysis: a streamlined graphic user interface that includes a database to organize information of all scans and users, as well as dedicated resources for training of PET procedures such as calibrations, image processing, application of different parameters and 3D image reconstruction algorithms, filters, etc.

Features

- ✓ Standalone software tool
- ✓ Intuitive user interface, the perfect solution for academic and preclinical users
- ✓ Comprehensive functionalities for image acquisition, reconstruction, display and analysis
- ✓ Three different scanning modes: fast, medium, slow, that can be customized according to the need of the study
- ✓ Database archive: automatic storage of all scan information, access-controlled and easily searchable by technician, imaging subject, project, date or specific scan details (radiotracer, study, protocol, etc.)
- ✓ Real-time images: 3D volume & slices, dynamic frames & total scan, zoom, pan, filters: pixel size, energy, DOI, interpolation + 5 image filters and 20 colormaps
- ✓ Reconstruction: FBP 2D/3D, MLEM, OSEM (GPU accelerated)
- ✓ Export: raw data, DICOM, Interfile, formats compatible with different Image Analysis Software, such as Amide, PMOD, 3D Slicer
- ✓ Support tools (auto-archiving and audit-log)
- ✓ Operating system: Windows®

EasyPET.3D software®



Encrypted database

